

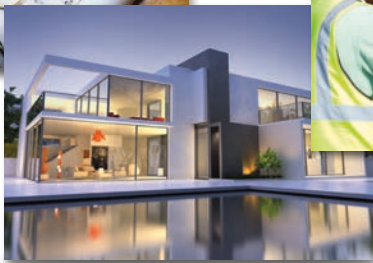
THE NEXT STANDARD OF ENGINEERING



imagePROGRAF TX-3000 Printer



imagePROGRAF TX-4000 MFP T36 Printer

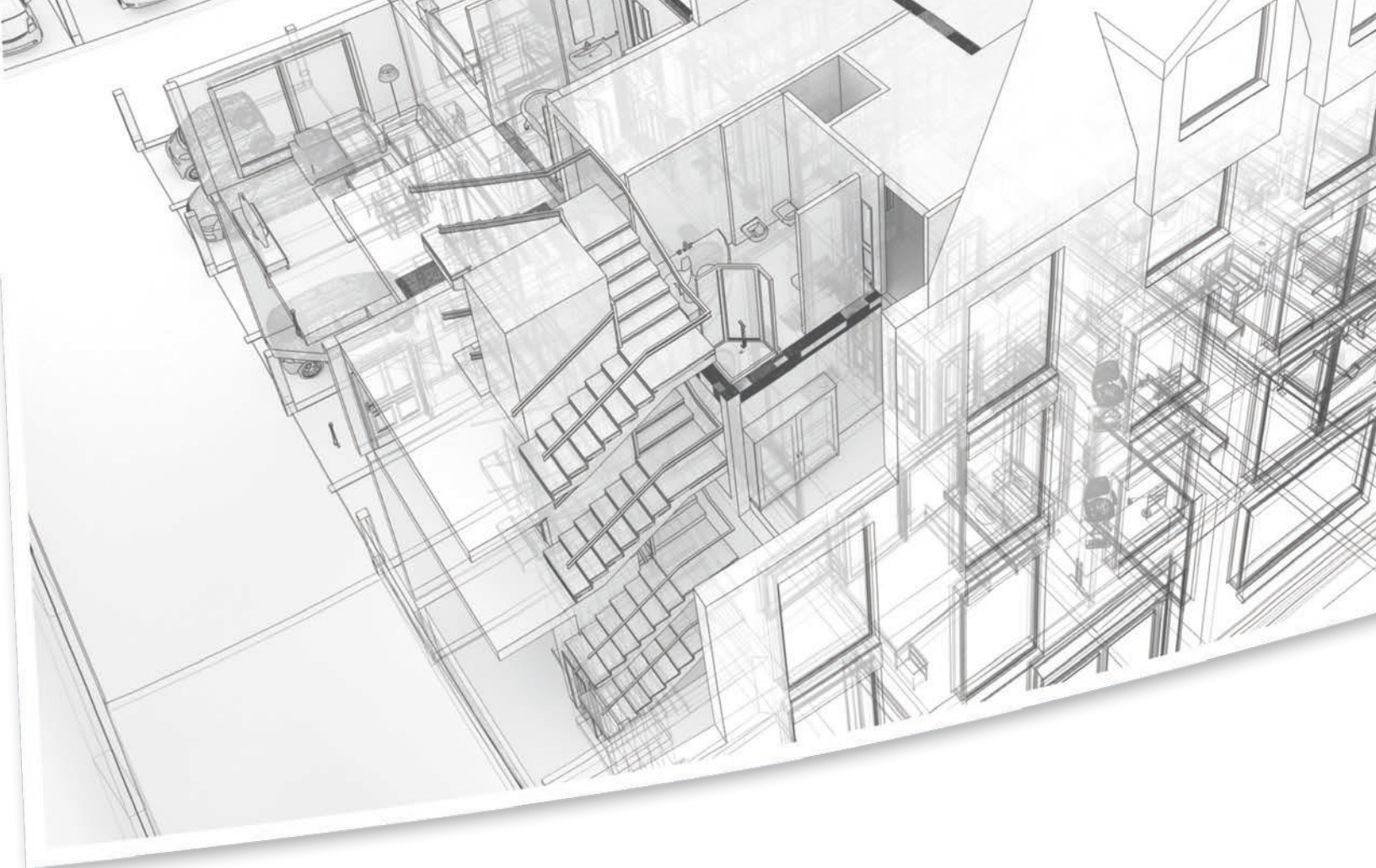


SETTING THE NEXT STANDARD OF ENGINEERING

Canon delivers the imagePROGRAF TX Series of Large-format Printers—the new solution to help you capitalize on the emerging market trends and help lead your organization on the path to success.

- 36" imagePROGRAF TX-3000
- 44" imagePROGRAF TX-4000
- 36" imagePROGRAF TX-3000 MFP T36
Scan-to-Copy/File/Share Solution
- 44" imagePROGRAF TX-4000 MFP T36
Scan-to-Copy/File/Share Solution





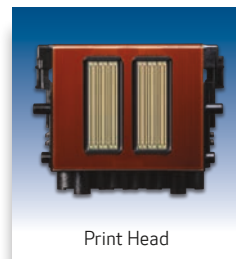
CORE TECHNOLOGIES

**#3 IN OVERALL
U.S. PATENTS***

**AMONG TOP 5
IN THE U.S.
PATENTS FOR 31
CONSECUTIVE
YEARS***

Canon continues to innovate and build on its award-winning technology,** year after year. These advances have allowed Canon to design solutions to help improve productivity, maximize use, and enhance security features in a seamless system that can put you at the forefront of the large-format printing industry.

Built for today's culture—where more is asked with less—Canon now offers multifaceted advanced solutions for the high-production, technical document inkjet printer market.



Print Head



Optional Multifunction Roll



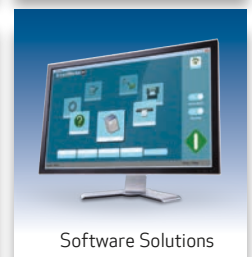
LUCIA TD Pigment Ink



TX Stacker



Data Security



Software Solutions

* U.S. Patent and Trademark Office, 2017
** BLI, Wide Format Line of the Year, 2017

ADVANTAGES BUILT RIGHT IN

All the core technologies of the imagePROGRAF TX Series printers are new, including the ink system, the print head, and the mechanical platform. These printers satisfy the needs of the high-volume CAD and low-volume LED plotter markets with print quality, usability, security, and **print speeds up to 147 D-sized prints per hour.**♦

LUCIA TD PIGMENT INK

The imagePROGRAF TX Series printers have an all-new, 5-color LUCIA TD Pigment ink system. This ink produces fine lines and sharp text, even on non-inkjet coated paper. This ink provides a balance between bleed resistance, black density, and water resistance not found in dye ink. Choose from 160 ml, 330 ml, or 700 ml ink tanks.



AUTOMATIC MEDIA LOADING

For ease of use, the imagePROGRAF TX Series printers offer Automatic Media Loading. Simply load a roll of media onto the roll holder, place it in the printer, and that's it! The printer is able to detect the roll and then automatically feeds the media. No manual roll feeding is required.

SECURITY FEATURES

The imagePROGRAF TX Series Large-format Printers come equipped with security features designed to help protect confidential information. Features include:

- Encrypted Hard Drive
- Secure Disk Erase (Conforms to U.S. Department of Defense standard DoD5220.22-M)
- IPsec Support
- SSL/TLS
- 802.1x Authentication

SECOND ROLL OPTION

The optional Multifunction Roll System can be used in two different ways. You



can load a second roll of media, which can be of a different type and size, so you can automatically switch between media

types and sizes, without interrupting your workflow. Or the unit can be operator-configured as a bi-directional Take-up unit.

For production printing, two rolls of media up to 650 ft. in length each (6.7" diameter) can be loaded on the printer, giving you the ability to produce over 4,500 sq. ft. of continuous printing on the TX-4000.

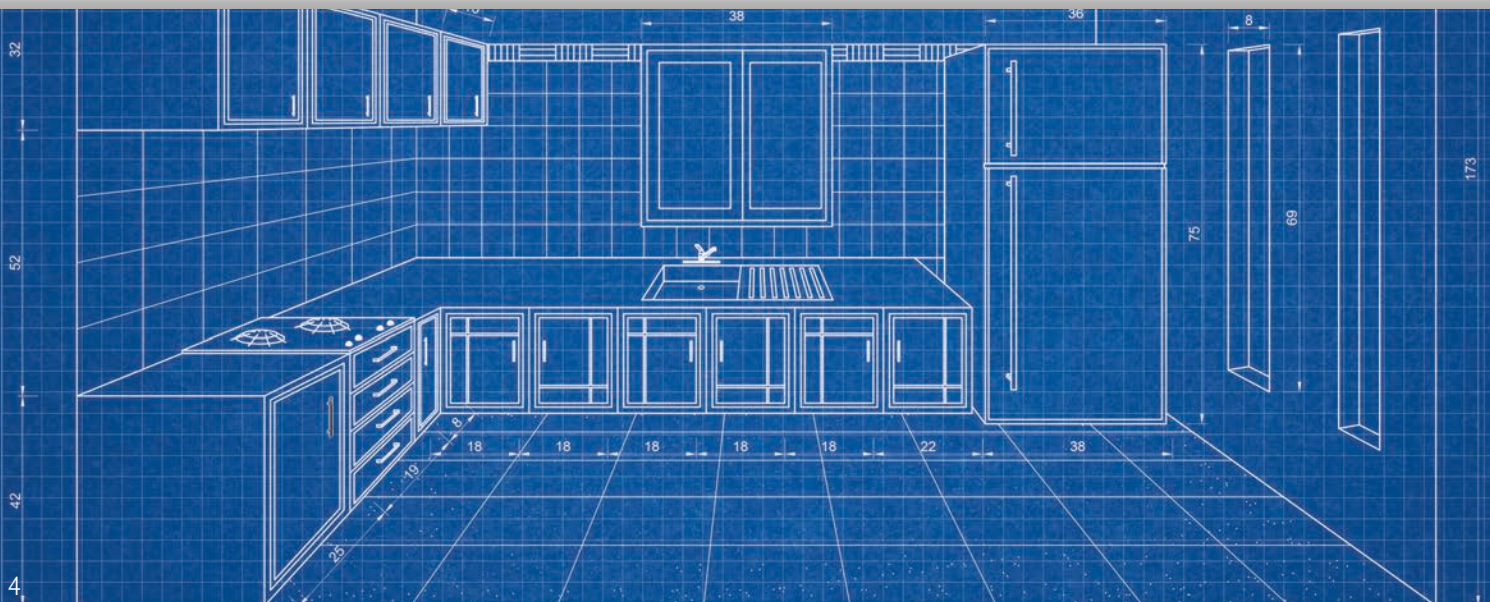
TX STACKER

The new TX Stacker can stack up to 100 sheets of ARCH C, ARCH D, or ARCH E page sizes for increased productivity. When not needed, the TX Stacker can be folded for a smaller printer footprint.

SUB-INK TANK SYSTEM

As always, the Sub-Ink Tank System is standard with all imagePROGRAF printers for uninterrupted printing. This feature allows for virtually all the available ink in a tank to be used before having to replace it, helping eliminate any wasted ink.

♦ Plain paper, Fast (Q5) mode.





PRINTING SOLUTIONS

A wide variety of standard software is available to help streamline and optimize workflows in large-format printing environments.

DIRECT PRINT & SHARE

This cloud portal solution gives users the ability to upload, download, and print files, including:

- Drag-and-drop files to a Hot Folder
- Batch Print Files—PDF, JPEG, TIFF, and HP-GL/2 supported
- Upload files to the cloud and share across multiple sites

DIRECT USB PRINTING

Never before have imagePROGRAF 5-color printers supported direct USB drive printing. Now both PDF and JPEG files can be directly printed on the imagePROGRAF TX Series devices. Simply input the thumb drive into the USB port on the printer, preview the image on the operation panel, and print!

Wi-Fi®

Wi-Fi connectivity* is standard for the imagePROGRAF TX Series printers.

UNIFIED PRINTER DRIVER

A unified Windows driver enables users to print to any imagePROGRAF TX Series device, without the need to install additional drivers for each printer model. This simplifies installation of multiple devices within the same environment.

AutoCAD® OPTIMIZED PRINTER DRIVER

This optimized printer driver enables accurate printing of data created with AutoCAD.

PosterArtist Lite

This poster-creation software for PCs makes it easy to create posters, signs, and banners from hundreds of customizable

templates and stock images. Users just follow the simple, step-by-step, on-screen instructions—no design experience is required! For more information, visit usa.canon.com/posterartist

ACCOUNTING MANAGER

This helps track actual ink and media usage and costs for up to 50 devices.

CANON'S PRINT PLUG-IN FOR MICROSOFT® OFFICE

Makes printing enlargements from Microsoft® Excel®, Word, and PowerPoint® as easy as printing to a desktop printer! The on-screen wizard simplifies settings, scaling, and paper size selection.

MEDIA CONFIGURATION TOOL

Register new or custom media types and update the list of Canon GENUINE® media.

* Wireless printing requires a working network with wireless 802.11b/g or 802.11n capability. Wireless performance may vary based on terrain and distance between the printer and wireless network clients.

imagePROGRAF TX MFP T36 LARGE-FORMAT PRINTERS

Scan-to-Copy/File/Share, the imagePROGRAF TX-3000 MFP T36 and imagePROGRAF TX-4000 MFP T36 models are integrated, multifunction, large-format solutions that include a T36 scanner, all-in-one touch screen computer, TX Stacker, and SmartWorks software.

The Canon imagePROGRAF TX MFP T36 systems are multicomponent, multifunction solutions for architects, engineers, construction, GIS, and other professionals who need to scan, edit, save, share, and print large-format documents easily and efficiently.

All-in-One Design

- Scanner attaches to the top of the printer
- Monitor stand attaches directly to the printer stand

Simultaneous Processing of Scanning and Printing

- Scanner and printer work independently allowing for greater productivity



*Shown with optional Multifunction Roll System.

SOFTWARE AND SCANNER

SmartWorks MFP scanning software simplifies large-format scanning with intuitive operations on the touch screen display. Even novice users can easily scan, copy, or edit large-format images.

T36 SCANNER

The T36 scanner incorporates a SingleSensor Technology Assembly, which helps provide consistent and better color accuracy with more detail in the shadows and highlights than a staggered CIS array scanner.

Features

- Scanning speed of up to 13 inches per second (monochrome) and 6 inches per second (color)
- Scan a document up to 2.0 mm thick
- Face up/front load/rear exit
- Straight paper path

SmartWorks SOFTWARE

New enhancements have been made to the SmartWorks Software included with both the TX-3000 MFP T36 and TX-4000 MFP T36 printers.



SmartWorks offers:

- An easy-to-use interface with customizable background[▲] and presets
- Scan-to-Multipage PDF as a standard feature!
- Ability to mark up documents directly on the monitor[▲]
- Real-time preview on the large 15.6" touch screen

[▲]Available 2018

T36 SCANNER SPECIFICATIONS

Scan Speed*

- 48-bit Full Color @ 200 dpi: 6" (per second)
- 16-bit Grayscale and Monochrome @ 200 dpi: 13" (per second)

Scan Modes

- 16.7-million Color RGB (24-bit)
- 256-level Grayscale (8-bit)
- Black and White (1-bit)

Color Space

sRGB

Maximum Resolution

1200 dpi (optical)

Scan Accuracy**

+/- 0.1% ; +/- 1 pixel

Maximum Image Width

36"

Maximum Media Width

38"

Maximum Scan Length

315" (JPEG/PDF), 598" (TIFF)

Maximum Media Thickness

0.079" (2 mm)

Media Feed System

Adaptive CIS media focus management and media guide mechanism; intuitive face-up, front-loading, and front/rear-exit media path; automatic media size detection with optical media sensors

Digital Imaging Technology

Contact Image Sensor (CIS) Technology (SingleSensor Assembly)

- 48-bit RGB digital color image capture
- 16-bit grayscale image capture
- Panchromatic monochrome and black and white
- Bi-directional extra long-life LED light system for optimum object illumination and instant-on scanning capability

Digital Image Processing

- 2D Intelligent Adaptive Thresholding (IAT) (1-bit mode)
- Fixed Threshold Black and White (1-bit mode)
- Dynamic Normalization Application (DNA) with 16-bit Super Sampling

User Status and One-Touch Operation

Right-side mounted control panel; walk-up operation and user selection of stop, forward and rewind, scan, copy, or copy and archive

Included Software

- SmartWorks MFP Scan-to-Copy/File/Email with Real-time Image Viewer. Supports TIFF, JPEG, TIFF G4, and PDF

Operating System

Windows 10 Enterprise LTSB (x64)

User Maintenance

Installable Plug-and-Play Scanner; Simple Cleaning

Scanner Interface Kit

Superspeed USB 3.0 (PC Connector Compatible with USB 2.0 and USB 3.0 sockets)

Operating Environments

10 – 35°C, 35-80% RH, Non-condensing

External Power Supply

100-240 VAC Autosensing +/- 10%, 50-60Hz

Scanner Power Consumption

- 53 Wh (scanning)
- 5 Wh (stand-by)

Compliances

VCCL, CB, CE, FCC, UL, RoHS, ENERGY STAR®

Scanner Dimensions

Height: 6.3"
Width: 43.6"
Depth: 14.4"

Scanner Weight

Approx. 33.1 lb.

What's In The Box?

- T36 Scanner with Power Cord, USB 3.0 Cable
- Power Supply
- Ethernet Cable
- Stand
- (2) Paper Edge Guides
- (3) Document Return Guides
- All-in-One Touch Screen Computer
- USB Drive with SmartWorks MFP Software, Scanner User Manual, and Quick Start Guide
- Calibration Target
- T36 Scanner Quick Start Guide

* The scan rate is proportional across the full range of resolutions supported by the scanner. Actual scan times will depend on the host system performance. Quoted top speeds may be limited by the effective bandwidth of the USB 2 and is not guaranteed for all media types.

** The quoted scan accuracy may vary depending on the operating environment and the thickness of the media.

Note: The imagePROGRAF TX Series MFP T36 systems contain multiple components, some of which are manufactured by third parties. To the extent that such third-party offerings come with limited warranties, such limited warranties are hereby passed to the purchaser, and Canon shall have no obligation or any liability with respect to such third-party offerings.

imagePROGRAF

TX Series

SPECIFICATIONS

Print Head

PF-06

Technology

FINE (Photolithography Inkjet Nozzle Engineering)

Print Resolution (Max.)

2400 x 1200 dpi

Line Accuracy*

±0.1% or Less

Minimum Line Weight**

0.02 mm

Number of Nozzles

Matte Black: 5,120 Nozzles

Other Colors: 2,560 Nozzles per Color

Droplet Size

5 Picoliter

Nozzle Pitch (Head Resolution)

1200 dpi x Two Rows

Print Head Swath

1.07 inch

Ink Type

Pigment: Matte Black (MBK), Black (BK), Cyan (C), Magenta (M), Yellow (Y)

Ink Tank

Shipped with Printer:

TX-3000 (160 ml each color, 330 ml MBK)

TX-4000 (330 ml each color)

Replacement: PFI-110 (160 ml), PFI-310 (330 ml), or PFI-710 (700 ml)

Ink Supply Method

Tubing System with Sub-tanks for Continuous Ink Supply

Nozzle Recovery System

Non-firing Nozzle Detection and Compensation

Printer Controller

L-COA PRO

Printer RAM

128 GB (Virtual), 2 GB (Physical)

Hard Drive

500 GB

Mailboxes (User Job Storage)

One Common Inbox; 29 User Inboxes (Password-protected)

Media Feed

Roll Feed: One Roll, Front-loading, Front Output

Media Width

TX-3000

Roll Feed: 8"-36" (203 mm -914 mm)

Cut Sheet: 8"-36" (203 mm -914 mm)

TX-4000

Roll Feed: 8"-44" (203 mm -1118 mm)

Cut Sheet: 8"-44" (203 mm -1118 mm)

Printable Margins

Roll Feed: All Sides: 0.12" (3 mm) or 0" for Borderless

Maximum Print Length (Single Page)†

Roll Feed: 59' (18 m)

Cut Sheet: 63" (1.6 m)

Borderless Printing Widths (Roll Media Only)

TX-3000

8", 10", 12", 14", 16", 17", 20", 24", 30", 36", B4 (10.12"/257 mm), A3 (11.69"/297 mm), A3+ (12.95"/329 mm), A2 (16.54"/420 mm), B2 (20.28"/515 mm), A1 (23.39"/594 mm), B1 (28.66"/728 mm), A0 (33.11"/841 mm)

TX-4000

8", 10", 12", 14", 16", 17", 20", 24", 30", 36", 42", 44", B4 (10.12"/257 mm), A3 (11.69"/297 mm), A3+ (12.95"/329 mm), A2 (16.54"/420 mm), B2 (20.28"/515 mm), A1 (23.39"/594 mm), B1 (28.66"/728 mm), A0 (33.11"/841 mm), B0 (40.55"/1030 mm)

Media Cutter

Durable Dual-Blade Rotary Cutter

Media Thickness

0.07 - 0.8 mm

Media Core Sizes

2" and 3" Core (Adapter Included)

Maximum Roll Outer Diameter

6.7" (170 mm)

Media Output

TX Stacker (Standard)

Printing Software Utilities

Accounting Manager, Apple AirPrint,†† Canon Print Service, Device Management Console, Direct Print & Share, Free Layout Tool, imagePROGRAF Printer Driver for Windows®/Mac®, Media Configuration Tool, PosterArtist Lite for Windows, Printer Driver Extra Kit for Windows/Mac (Free Print Utility Layout, Advanced Preview), Optimized Driver for AutoCAD®, Print Plug-in for Microsoft® Word/Excel/PowerPoint® for Windows, Quick Utility Toolbox

Operating System

Windows 7 (32/64 bit), Windows 8.1 (32/64 bit), Windows 10 (32/64 bit), Windows Server 2008 R2, (32/64 bit), Windows Server 2012 (64 bit), Windows Server 2012 R2 (64 bit), Windows Server 2016 (64 bit), Macintosh OS X v10.10.5-v10.12 X

Print Language

Printer: SGRaster, HP-GL/2, HP RTL, PDF, JPEG

Interface

Standard (Built-in): USB 2.0 Hi-Speed, 10/100/1000Base-T/TX, Wireless LAN (IEEE 802.11 b/g/n)‡

Direct USB Thumb Drive Printing

Acoustic Noise

Operation: 51 dB (A) or Less

Standby: 35 dB (A) or Less

Acoustic Power: 6.9Bels or Less

Power Supply

AC 100-240V (50-60 Hz)

Power Consumption

Maximum: **TX-3000**: 105 W or Less

TX-4000: 107 W or Less

Standby: 3.6 W or Less

Power Off: 0.3 W or Less (Executive Order Compliant)

Certifications

Electrical Safety Regulations

C TÜVus (U.S.A.), C TÜVus (Canada)

Electromagnetic Interface Regulations

FCC Part 15B (U.S.A.), IC (Canada)

Radio Regulations

FCC Part 15C (U.S.A.), IC (Canada)

Environmental Certifications

ENERGY STAR® (Worldwide)

Operational Environment

Temperature: 59° - 86° F (15° - 30° C)

Relative Humidity: 10 - 80% (No Condensation)

Printer Dimensions (H x W x D) and Weight with

Stand and Stacker (with Stacker Open)

TX-3000: 46.0" x 54.7" x 46.8" Approx. 257 lb.

TX-4000: 46.0" x 62.7" x 46.8" Approx. 277 lb.

Package Dimensions (H x W x D) and Weight

With Stand and Pallet

TX-3000

41.8" x 63.2" x 35.6" Approx. 337 lb.

Stacker

11.5" x 49.2" x 35.7" Approx. 53 lb.

TX-4000

41.8" x 71.7" x 36.0" Approx. 364 lb.

Stacker

11.5" x 57.6" x 35.7" Approx. 55 lb.

Options

• Multifunction Roll System

(**TX-3000**: RU-32, **TX-4000**: RU-42)

• 2"/3" Roll Holder Set

(**TX-3000**: RH2-34, **TX-4000**: RH2-45)

• PosterArtist

User-Replaceable Items

• Ink Tank (PFI-110/PFI-310/PFI-710)

• Print Head (PF-06)

• Maintenance Cartridge (MC-30)

• Cutter Blade (CT-07)

What's In The Box

Printer, TX Stacker, Stand, 2"/3" Core Media Spool (Adapters Included), Power Cord, Tools and Screws, Print Head, Maintenance Cartridge (Installed), 5 Ink Tanks (MBK/C/M/Y/BK), Sample Heavyweight Coated Paper (A2/5 sheets), Ethernet Card (built-in), USB 2.0 High-speed Interface, USB Connection Sheet, iWR Service Terms Leaflet, User Manual, Quick Setup Guide, User Software CD for Windows (Printer Driver Utilities), PosterArtist Lite CD, User Registration Card

* Line accuracy repeatability is guaranteed after a user performs necessary adjustment and under the same environmental conditions. Applies to media for line drawing (Plain Paper, Coated Paper, CAD Translucent Matte Film, and CAD Tracing Paper) only.

** Theoretical value based on data resolution.

† The maximum printable length varies, depending on the application, OS, and RIP used.

†† To be supported in 2018 by updating firmware.

‡ Wireless printing requires a working network with wireless 802.11b/g or 802.11n capability. Wireless performance may vary based on terrain and distance between the printer and wireless network clients.

USA.CANON.COM/LARGEFORMAT



Canon products offer certain security features, yet many variables can impact the security of your devices and data. Canon does not warrant that use of its features will prevent security issues. Nothing herein should be construed as legal or regulatory advice concerning applicable laws; customers must have their own qualified counsel determine the feasibility of a solution as it relates to regulatory and statutory compliance. Some security features may impact functionality/performance; you may want to test these settings in your environment. Subscription to a third-party cloud service is required. Subject to third-party cloud service providers terms and conditions. AirPrint functionality requires iPad, iPhone 3GS or later, or iPod touch 3rd generation or later device running iOS 4.2 or later, and an AirPrint-enabled printer connected to the same network as your iOS device. A printer connected to the USB port of your MAC, PC, AirPort Base station, or Time Capsule is not supported. Microsoft, Office, Windows, Outlook, Word, Excel and PowerPoint are either registered trademarks or trademarks of Microsoft Corporation in the United States and/or other countries. Wi-Fi is a registered trademark of the Wi-Fi Alliance. Autodesk, the Autodesk logo, and AutoCAD are registered trademarks or trademarks of Autodesk, Inc., and/or its subsidiaries and/or affiliates in the U.S.A. and/or other countries.

As an ENERGY STAR® Partner, Canon U.S.A., Inc. has qualified these models as meeting the ENERGY STAR energy efficiency criteria through an EPA recognized certification body. ENERGY STAR and the ENERGY STAR mark are registered trademarks owned by the U.S. Environmental Protection Agency. Canon and imagePROGRAF are registered trademarks of Canon Inc. in the United States and may also be registered trademarks or trademarks in other countries. All other referenced product names and marks are trademarks of their respective owners. All printer output and screen images are simulated. Specifications and availability subject to change without notice. Not responsible for typographical errors.

©2018 Canon U.S.A., Inc. All rights reserved.

0212W973

0518R2-TXBro-5M-DIH

